

2 Grenea Cottages
Shore Road, Port St Mary
£825,000



A Coastal Gem Situated In The South Of The Island On Shore Road

Discover an elegant and unique waterfront home located on the breathtaking Isle of Man, perfectly positioned with your garden right at the water's edge. This luxurious detached property boasts stunning, uninterrupted sea views to the front and picturesque rural landscapes to the rear.

Featuring an exquisite open-plan Lounge, kitchen, dining, and family area bathed in natural light, this home also offers a sumptuous master suite, a guest bedroom with a kitchenette, and two additional double bedrooms – one with an en-suite. Indulge in the private sauna and shower room, or relax in the beautifully crafted wood-panelled bar.

Step outside to find two balconies and two sun terraces, ideal for enjoying the captivating scenery. The large beachfront garden, complete with a cabin and BBQ area, is perfect for hosting or simply savouring the serene coastal setting.

This property is a rare masterpiece, combining modern luxury with natural beauty – an idyllic retreat that perfectly encapsulates life by the sea.

Viewing Highly Recommended

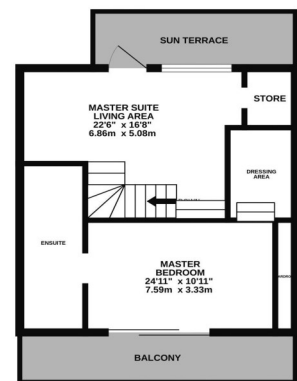
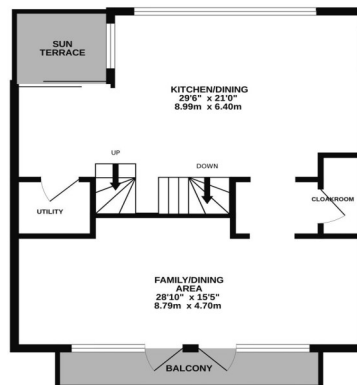
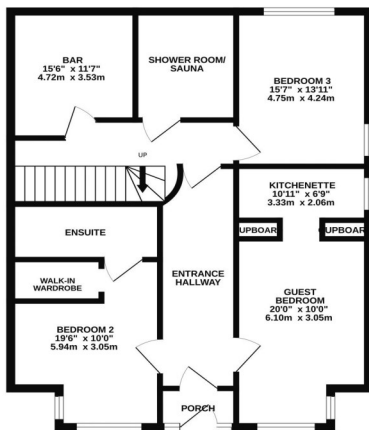
Directions: Travelling out of Port Erin continue straight through at the Four Roads roundabout, turning left at the give way onto the A5 Coast Road, continue past the Shore Hotel and then proceed for a short distance where 2 Grenea Cottages can be located on the left hand side.



GROUND FLOOR

1ST FLOOR

2ND FLOOR



Whilst every attempt has been made to ensure the accuracy of the floorplan contained here, measurements of doors, windows, rooms and any other items are approximate and no responsibility is taken for any error, omission or mis-statement. This plan is for illustrative purposes only and should be used as such by any prospective purchaser. The services, systems and appliances shown have not been tested and no guarantee as to their operability or efficiency can be given.
Made with Metropix ©2024