

**Apartment 6 Imperial Lodge**

**Port Erin**

**£280,000**



**Purpose Built Two Bedroom Second Floor Apartment With  
Fantastic Coastal Views Over Port Erin Bay And  
Within Easy Walking Distance of Port Erin Shops and Beach  
Purpose Built Two Bedroom Second Floor Apartment With**

Fantastic Coastal Views Over Port Erin Bay And  
Within Easy Walking Distance of Port Erin Shops and Beach  
Beautiful Coastal Walks With Fantastic Scenery

Open Plan Lounge/Diner With Large Bay Window Doors onto Good Size Balcony With  
Spectacular Sea Views

Fully Fitted Modern Cream Gloss Kitchen

Master Bedroom, Fitted Wardrobes with En-suite Shower Room and Access onto the Balcony

Second Double Bedroom With Fitted Wardrobes

Family Bathroom With Bath And Separate Shower, Vanity Wash Hand Basin With  
Underneath Storage, Toilet

Gas Fired Central Heating, Upvc Double Glazing Throughout

Allocated Parking Space, Lift Access To All Floors

Audio/Video Intercom Entry System

Active Management Company, Remainder Of A 999 Year Lease

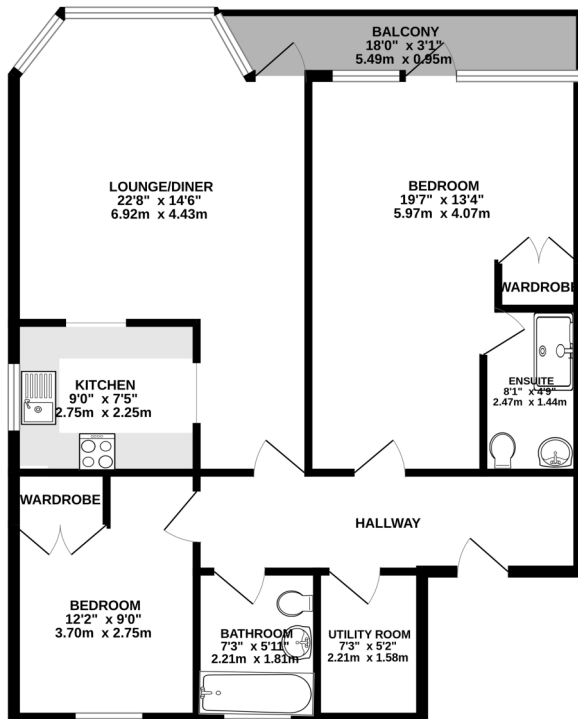
**NO ONWARD CHAIN**

**Directions:** Travelling through Port Erin and onto the Promenade heading toward Bradda, Turn right just prior to Imperial Heights into Ocean Castle Drive where the property is situated on the left hand side.

Rates Payable Please Contact The Isle of Man Treasury 01624 658661



GROUND FLOOR  
858 sq.ft. (79.7 sq.m.) approx.



TOTAL FLOOR AREA: 858 sq. ft. (79.7 sq. m.) approx.

Whilst every attempt has been made to ensure the accuracy of the floorplan contained here, measurements of doors, windows, rooms and any other items are approximate and no responsibility is taken for any error, omission or mis-statement. This plan is for illustrative purposes only and should be used as such by any prospective purchaser. The services, systems and appliances shown have not been tested and no guarantee as to their operability or efficiency can be given.  
Made with Metropix C2025