

48 Main Road, Onchan

Asking Price £194,950



Deceptively Spacious Character Mid Terraced Cottage Situated in a Popular Village Location

Close to Local Schools, Shops and Amenities

In Need of Total Modernisation Throughout

The Property Comprises:

Large Lounge (With Small Conservatory Off)

Spacious Dining Kitchen

2 Double Bedrooms

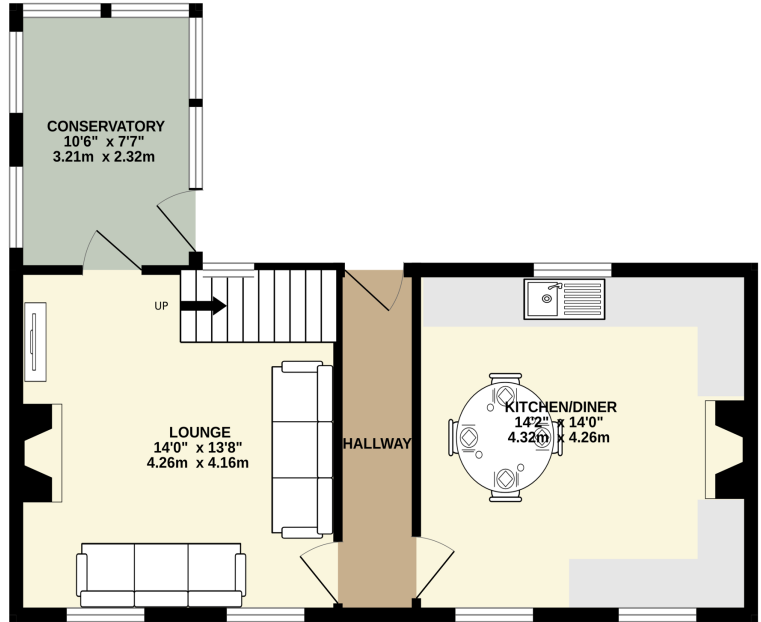
Family Bathroom

Small Rear Yard

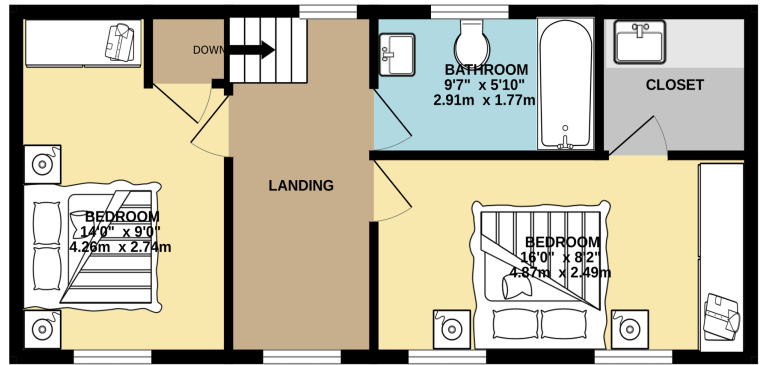
Travelling out of Douglas up Summerhill Road, Turn Right at the Mini Roundabout and Continue Through the Traffic Lights at the Manx Arms Public House. Continue Past the Co-op Through the Next Set of Traffic Lights and the Property can be Easily Located on the Right Hand Side.



GROUND FLOOR
502 sq.ft. (46.7 sq.m.) approx.



1ST FLOOR
435 sq.ft. (40.4 sq.m.) approx.



TOTAL FLOOR AREA : 937 sq.ft. (87.1 sq.m.) approx.

Whilst every attempt has been made to ensure the accuracy of the floorplan contained here, measurements of doors, windows, rooms and any other items are approximate and no responsibility is taken for any error, omission or mis-statement. This plan is for illustrative purposes only and should be used as such by any prospective purchaser. The services, systems and appliances shown have not been tested and no guarantee as to their operability or efficiency can be given.
Made with Metropix ©2025