

15 Traie Twoaie

Ramsey

£325,000



**An Immaculate Spacious Modern 3 Double Bedroom Property
In A Sought After Location In The Heart of Ramsey Town Centre**

Accommodation Comprises:-

Entrance Porch, Hallway with Modern Cloakroom/WC and Separate Utility Room
Spacious Open Plan Lounge/Dining Area and Kitchen With Built In AEG Oven, Induction Hob,
Microwave, Fridge Freezer, and Dish Washer,
Also Boasting Tiled Wood Effect Flooring and LED Built In Ceiling Lights
Double Doors Out To Patio and Rear Garden
3 Good Sized Double Bedrooms
Spacious Contemporary Tiled Bathroom With Separate Bath and Separate Shower Unit
Gas Central Heating
Off Road Parking for 2 Cars

****Ideal Family Home or Ideal Investment Property****

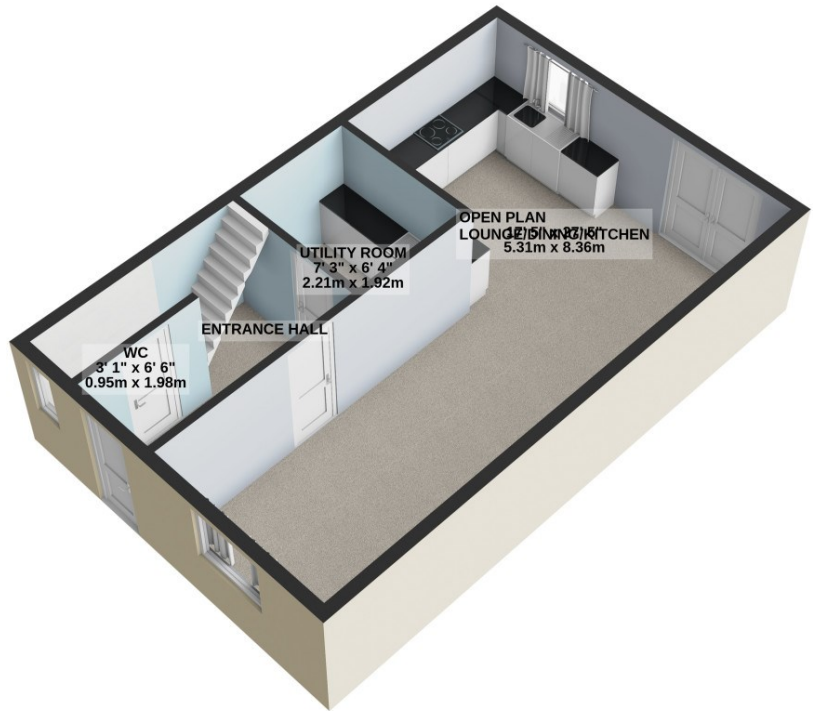
Directions: Travelling From Parliament Square towards Bowring Road Turn right down North Shore Road. Take the next turning on your right in to Traie Twoaie and follow the road round and Number 15 Can be found on the Left Hand Side clearly marked by our board.

Rates payable: TBA

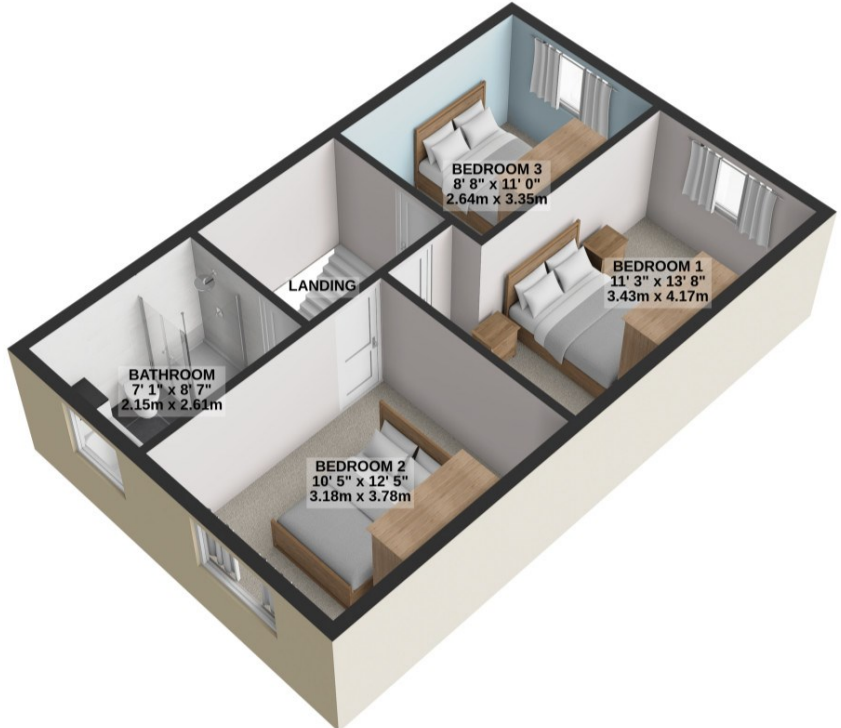
Services: All Major Services



GROUND FLOOR
478 sq.ft. (44.4 sq.m.) approx.



1ST FLOOR
478 sq.ft. (44.4 sq.m.) approx.



TOTAL FLOOR AREA : 955 sq.ft. (88.8 sq.m.) approx.

For illustrative purposes only. Decorative finishes, fixtures, fittings and furnishings do not represent the current state of the property. Measurements are approximate. Not to scale.
Made with Metropix © 2024