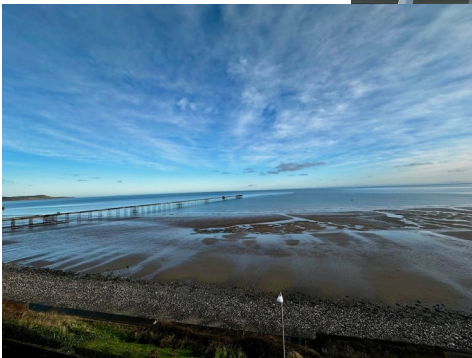


12A The Fountains**Ramsey****£399,950**

**Spacious, Top Floor Apartment in a well Managed Building,
with Stunning Panoramic Sea Views Across Ramsey Bay
Within Easy Reach of Ramsey Town Centre and All it's Amenities. Ideal as a 'Lock up and
Leave' Property**

Accommodation Comprises:

- Large Entrance Hall With Intercom Access
- Large Lounge With View to Sea and A Walk On Balcony To Sit On and Take In The Breathtaking Views
- Separate Good Sized Dining Area/Study Area off the Lounge
- Extensive Country Style Kitchen and Dining Area, Abundance of Cupboards and Fitted Appliances, also Boasting a Workable Island with Added Cupboards
- Separate Utility Room
- Good Size Family Bathroom With Separate Double Shower, Bath, WC and Bidet
- Master Double Bedroom has Ensuite Bathroom and A Separate Walk In Wardrobe As Well As Fitted Wardrobes
- 2nd Double Bedroom Also Has A Good Size Walk In Wardrobe
- Gas Fired Central Heating
- Active Well Run Management Company
- Double Underground Garage

Ideal Lock Up and Leave

Directions: Proceed from Parliament Square along Waterloo Road and then onto Ballure Road, turn left into Ballure Promenade and the building can be found on the right

Rates payable: TBA

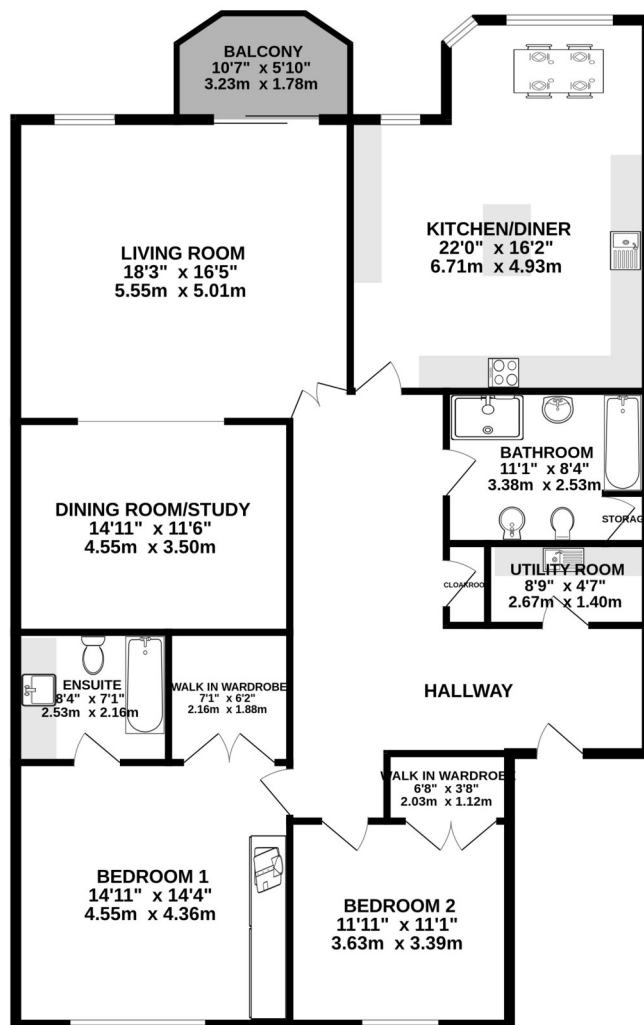
Inclusions: to be confirmed

Services: All Major Services

Management Fees : TBA



GROUND FLOOR
1643 sq.ft. (152.6 sq.m.) approx.



TOTAL FLOOR AREA : 1643 sq.ft. (152.6 sq.m.) approx.

Whilst every attempt has been made to ensure the accuracy of the floorplan contained here, measurements of doors, windows, rooms and any other items are approximate and no responsibility is taken for any error, omission or mis-statement. This plan is for illustrative purposes only and should be used as such by any prospective purchaser. The services, systems and appliances shown have not been tested and no guarantee as to their operability or efficiency can be given.

Made with Metropix ©2025