

**Comaha, The Vollan**

**Ramsey**

**£449,950**



**Beautifully Renovated To A High Standard This Period Semi Detached Family Property Is Surrounded By Lawned Gardens and Offers Plentiful Garage and Workshop Buildings. Sat In The Idyllic Location At The End Of Mooragh Promenade It Boasts Stunning Panoramic Sea Views**

**The Accommodation Comprises:-**

Entrance Hall With A uPVC Stable Door Leads Into A Spacious Hall With Stylish Quartz Flooring  
Understairs Wash Room

Large and Light Dual Aspect Family /Dining Room With Sea Facing Bay Windows, Marble Flooring,  
Also Features Solid Oak Doors and Skirting Boards, Gazco Living Flame Gas Fireplace with Granite Surround  
Spacious Contemporary German Kitchen With Corrian Worktops, Extensive Range of High Quality German Integral Appliances  
Underfloor Heating , Low Level Island Lighting and Sonos System and Polk Speakers Are All Features of This Stunning Kitchen  
Generous Master Bedroom, Quartz Flooring,

En-Suite Modern Bathroom With Marble Tiles and Victoria and Albert Limestone Bathroom Suite  
2nd Double Bedroom With Carpet Floors  
Family Bathroom With Solid Wood Floor

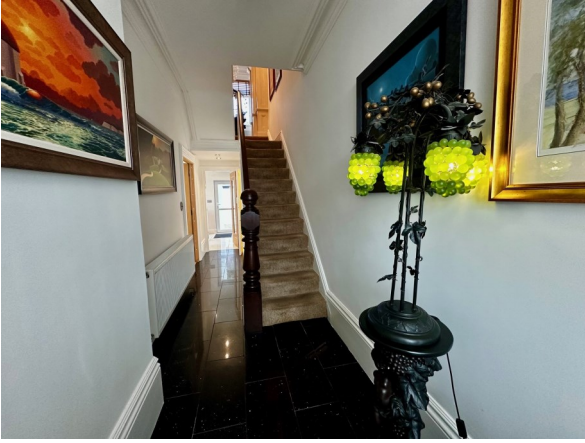
The Second Floor has a Spacious Double Bedroom and Bathroom (This can easily be partitioned to make a 4th Bedroom)

Outside there is a Rear Courtyard, Utility Room, Outside WC and Oil Store

Workshop and Modern Double Garage With Pitched Roof

Oil Fired Central Heating

uPVC Windows and Fitted Blinds Throughout



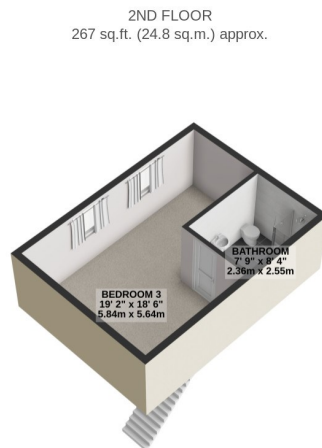
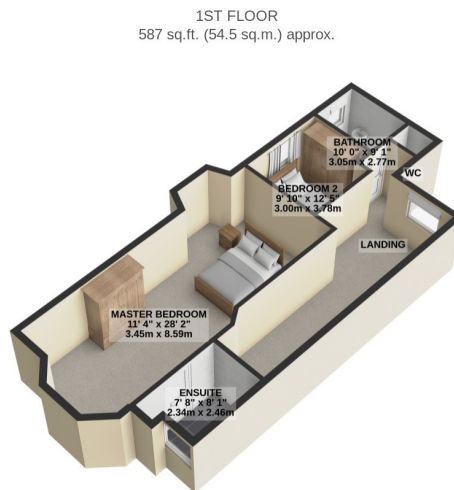
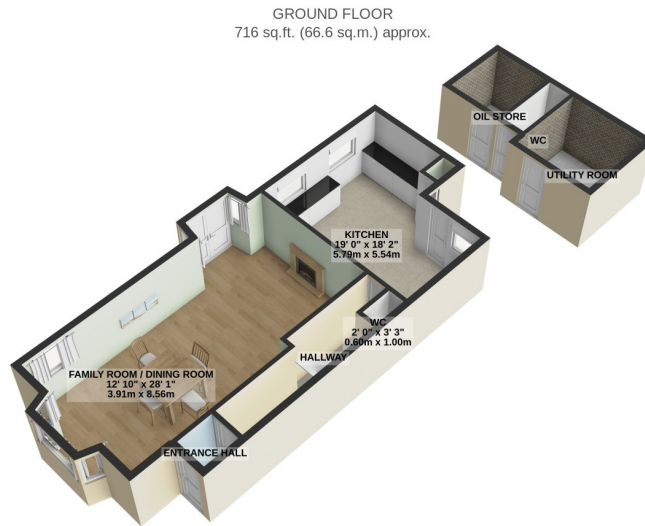


**Directions:** Travelling Along Ramsey Promenade Towards Bride Road Past Mooragh Park The Property Can Be Found At The End On The Left Hand Side.

**Rates payable:** TBA

**Inclusions:** to be confirmed

**Services:** All Major Services



TOTAL FLOOR AREA : 1571 sq.ft. (145.9 sq.m.) approx.

For illustrative purposes only. Decorative finishes, fixtures, fittings and furnishings do not represent the current state of the property. Measurements are approximate. Not to scale.  
Made with Metropix © 2024