

2 Rheast Moor Close

Ransey

£1450 Per Month (Incl Rates)



**2 Bedroom Detached Bungalow On A Good Sized Corner Plot
Sat In A Quiet Cul de Sac Within Easy Reach of Ramsey Town Centre , And All Amenities**

Accommodation Comprises:-

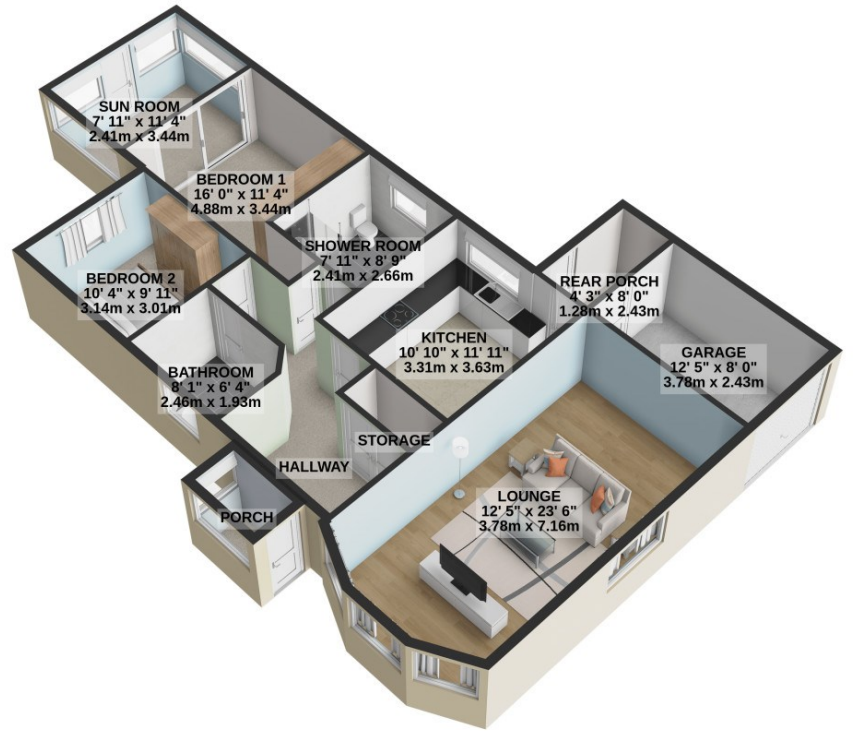
Porch That Leads Into Spacious Entrance Hall
Large Dual Aspect Lounge With Bay Window and Electric Fire
Spacious Modern Kitchen with Electric Oven, Hob and Built In Fridge and Freezer That Leads Into Rear
Porch Area With Access To The Integral Garage and Access To The Rear Patio and Garden Areas
2 Double Bedrooms Both With Fitted Wardrobes
Family Bathroom
Separate Shower Room and 2nd Toilet and Wash-basin
Sun Room
Integral Garage
Oil Fired Central Heating
Large Garden Shed
Off Road Parking

Directions: Travelling out of Ramsey from Parliament Square up Bowring Road. Turn Right Opposite The Grove Museum down Rheat Moor Lane. Take Your First Right Into Rheat Moor Close and Number 2 Is Immediately on your right on the Corner.

Services: All Major Services



GROUND FLOOR
1141 sq.ft. (106.0 sq.m.) approx.



TOTAL FLOOR AREA : 1141 sq.ft. (106.0 sq.m.) approx.

For illustrative purposes only. Decorative finishes, fixtures, fittings and furnishings do not represent the current state of the property. Measurements are approximate. Not to scale.
Made with Metropix © 2024

