

**2 Nursery Avenue
Onchan
£279,950**



**Delightful, Spacious 2 Bedroom, 2 Reception, 2 Bathrooms
End Of Terrace House**

**Convenient Location, Situated In The village Of Onchan Close To All Local
Amenities**

Good Sized Lounge, Large Separate Family/Dining Room With Built In Storage
Cupboards

Modern Fitted Kitchen With Granite Worktops And Rangemaster Cooker
Large Master Bedroom With An En-Suite Shower Room

2nd Double Bedroom

Exceptionally Large Modern Family Bathroom Comprising Freestanding Bath,
Good Size Shower, WC And Vanity Unit

New Gas Fired Central Heating Combi Boiler

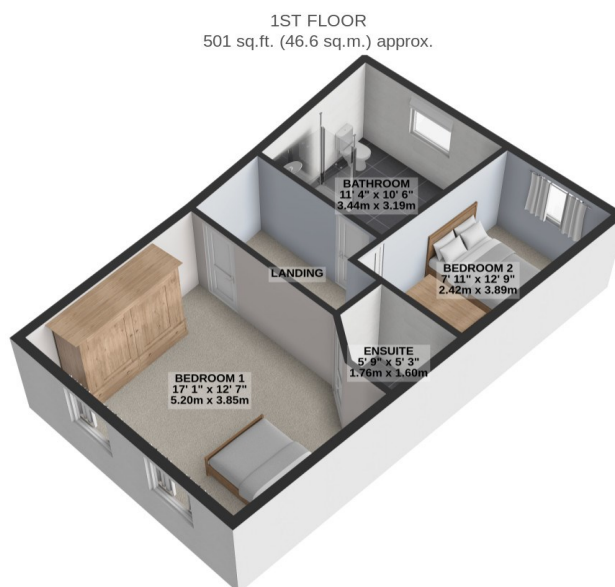
UPVC Double Glazed

Low Maintenance Brick Paved Front Garden And Private Enclose Rear Courtyard

****** NO ONWARD CHAIN ******

Directions : Travelling up Summerhill Road, through the roundabout, past Corkills Garage on the left, continue through the traffic lights and Nursery Avenue is the Second Turning on the left and number 2 can be found a short distance up on the left.

Rates : Please contact the Isle of Man Rates Office on 685661 for Current Rates



TOTAL FLOOR AREA : 1095 sq.ft. (101.7 sq.m.) approx.

For illustrative purposes only. Decorative finishes, fixtures, fittings and furnishings do not represent the current state of the property. Measurements are approximate. Not to scale.
Made with Metropix © 2024