

5 Selborne Drive

Douglas

£419,950



**Completely Refurbished 4 Bedroom Period Town House With Original Features
Highly Sought After Location, Close To Local Amenities, Schools, Shops, Bus Route**

Spacious Lounge With Bay Window/Diner With Plenty Of Natural Light

Newley Fitted Modern White Gloss Kitchen/Utility

4 Good Size Bedrooms, Modern 4 Piece Family Bathroom, En-Suite Shower Room

Boiler/ Storage Cupboard, Newly Installed Combi Gas Fired Central Heating Boiler

Rewired & Replumbed Throughout, Newly Fitted Carpets

Easily Managed Front Lawn Garden, Indian Stone Paving Patio Area To The Rear

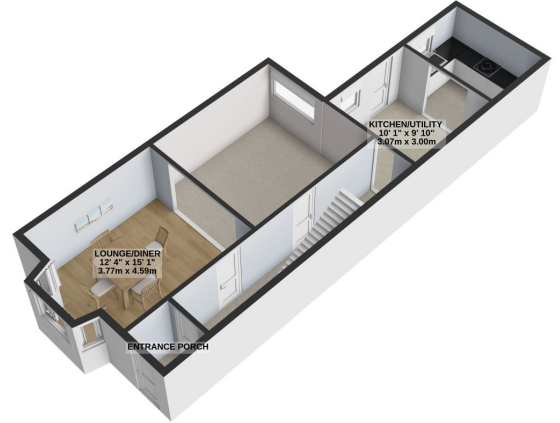
****** NO ONWARD CHAIN ******

Directions: Travelling Along Peel Road in the Direction of the Quarterbridge, At the Roundabout Take a Right Turn onto Quarterbridge Road and then Right onto Alexander Drive and follow the Road, Continue Passed The Wessex Garage on the Left. Take a Left Turn onto Selborne Drive Where Number 5 Can Be Found on the left Hand Side Clearly Identified by our For Sale Board.

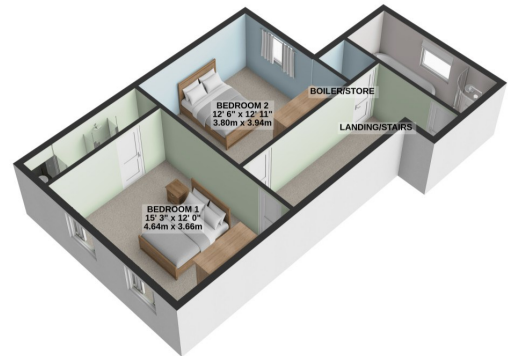
Whilst all particulars are believed to be correct, neither Property Wise Limited, or their clients guarantee their accuracy nor are they intended to form part of any contract.. Floorplans are only for illustrative purposes, decorative finishes, fixtures, fittings and furnishings do not represent the current state of the property. Measurements are approximate and not to scale.



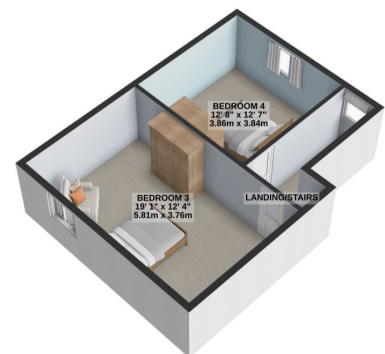
GROUND FLOOR
635 sq.ft. (59.0 sq.m.) approx.



1ST FLOOR
577 sq.ft. (53.6 sq.m.) approx.



2ND FLOOR
451 sq.ft. (41.9 sq.m.) approx.



TOTAL FLOOR AREA: 1663 sq.ft. (154.5 sq.m.) approx.

For illustrative purposes only. Decorative finishes, fixtures, fittings and furnishings do not represent the current state of the property. Measurements are approximate. Not to scale. Made with Metropix © 2024