

9 Rosehill Mews, Farmhill, Douglas

Asking Price £279,950



Attention First Time Buyers and Investors

Spacious End Terraced House

Immaculately Presented Throughout

Close to Local Schools Shops and Amenities

Property Comprises

Large Lounge Diner with Media Wall

Modern Fitted Kitchen

2 Double Bedrooms, Boarded Loft with Ladder Access

Modern Recently Refitted Family Bathroom

Gas Fired Central Heating

Newly Fitted uPVC Double Glazed Windows, Fascias, Soffits and Guttering (New Roof Felt)

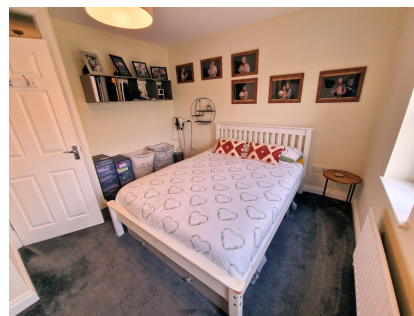
PIV (Positive Input Ventilation) Dry Air Ventilation System

Lovely Low Maintenance Private Rear Garden with Decked Area and Artificial Lawn

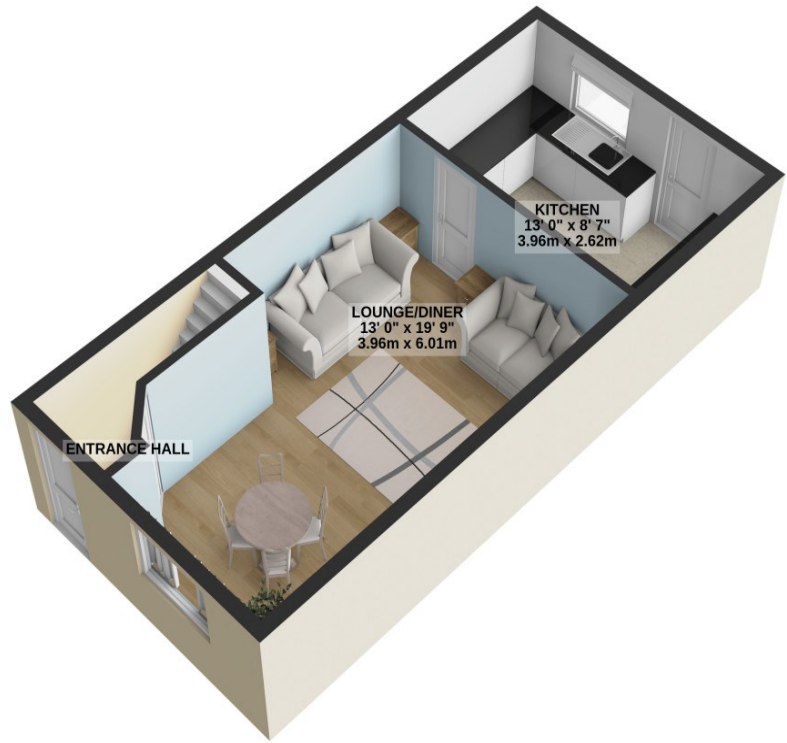
Ample Parking

Viewings Highly Recommended

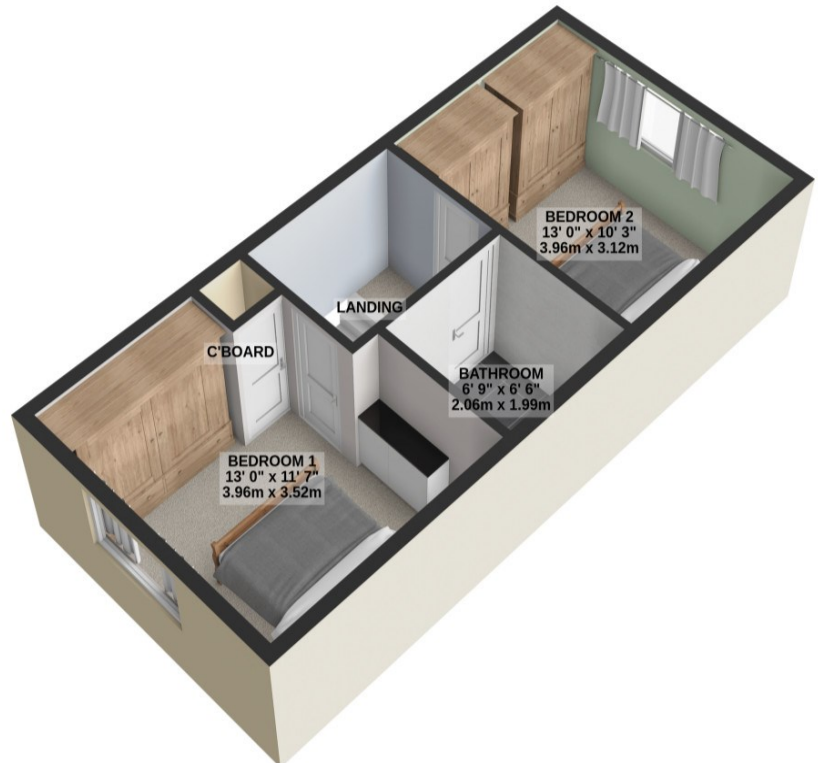
Directions: Travelling West on the Peel Road out of Douglas , Turn Left at Braddan Church on to Saddle Road then Right at Roundabout on to Vicarage Road turning Left at 2nd Roundabout on to Stevenson Way,. Take 2nd Right on to Clybane Rise then 3rd Right Again in to Rosehill Mews Where the Property can be Easily Located on the Left Hand Side.



GROUND FLOOR
361 sq.ft. (33.6 sq.m.) approx.



1ST FLOOR
368 sq.ft. (34.2 sq.m.) approx.



TOTAL FLOOR AREA : 729 sq.ft. (67.7 sq.m.) approx.

For illustrative purposes only. Decorative finishes, fixtures, fittings and furnishings do not represent the current state of the property. Measurements are approximate. Not to scale.
Made with Metropix © 2024