

**“New Build”**

**Grove Mount, Ramsey**

**IM8 3HN**

**£549,000**



**Superb New Build with 10 Year Warranty, this Stunning Property has been Built to High Specification with Solar Panels, Under Floor Heating and Data Cables in all Rooms.**

**Situated in a Generous Size Plot this Property is in a Sought After Location close to GP Surgery, Hospital and Walking Distance to Ramsey Town Centre, Schools and all Amenities.**

**Accommodation Comprises:**

**Ground floor: Entrance Hall with Stairs to First Floor, (wheelchair access on ground floor)**

**Spacious Lounge Diner with Bifold Doors to Rear Garden & Patio,**

**Bespoke Fitted Kitchen with Build in Dishwasher/Fridge Freezer, AEG Hob and Double Oven, and Quartz Worktops.**

**Utility Room, Bathroom, Large Double Bedroom,**

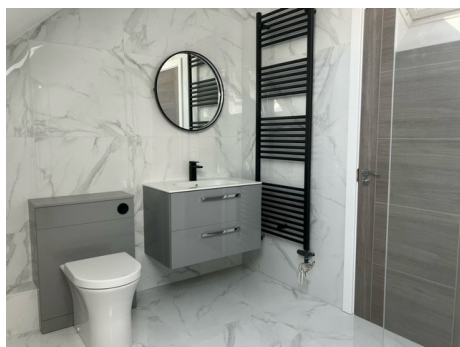
**First Floor: Two Double Bedrooms, Large Shower Room, Study/Nursery or Dressing Room.**

**Garage and Parking for Several Vehicles,**

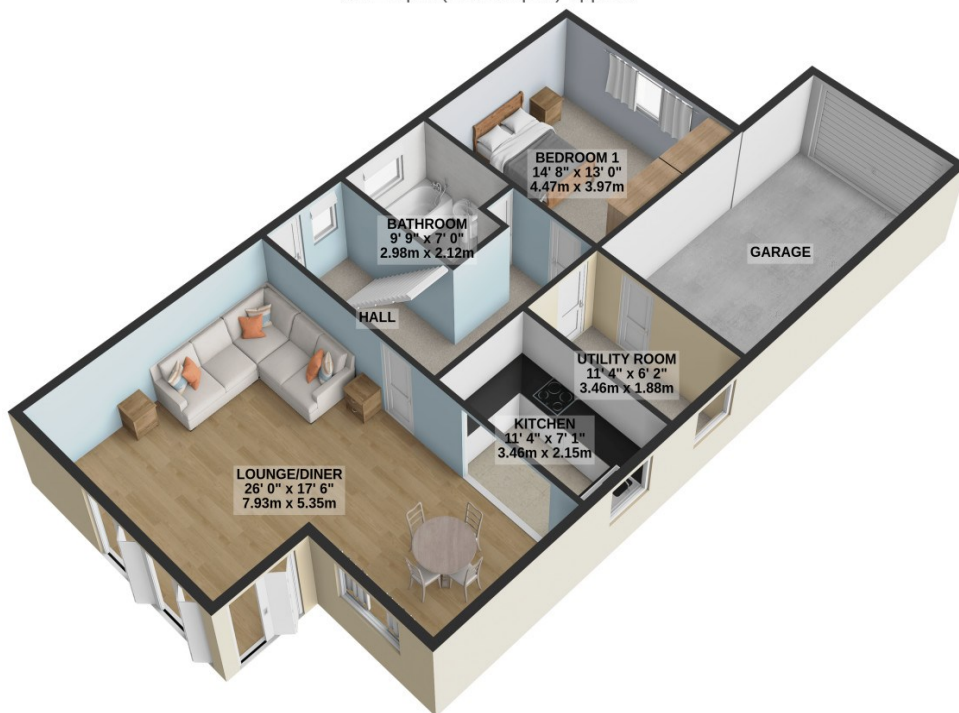
**Gas Fired Central Heating, Double Glazed Throughout. Lovely Garden with Patio Areas Ideal for Entertaining.**

**"Beautifully Presented, Viewing Highly Recommended"**

Directions : Travelling from Ramsey Town Centre towards Andreas on Bowring Road, continue up the hill and turn right onto Grove Mount, the new build property can be found on the right hand side easily identified by our 'for sale' board.



GROUND FLOOR  
1162 sq.ft. (107.9 sq.m.) approx.



1ST FLOOR  
714 sq.ft. (66.3 sq.m.) approx.



TOTAL FLOOR AREA : 1876 sq.ft. (174.3 sq.m.) approx.

For illustrative purposes only. Decorative finishes, fixtures, fittings and furnishings do not represent the current state of the property. Measurements are approximate. Not to scale. Made with Metropix © 2024