

“Choon Hua”

The Crescent West, Ramsey,

IM8 2JN

£487,500



Detached Property Standing Proud in the Heart of Ramsey, Walking Distance to all Local Amenities, Superb Rear Garden in an Elevated Position Enjoying Amazing Views over Ramsey and Out to Sea.

Accommodation Comprises:-

Entrance Porch, Entrance Hall, Cloakroom/WC,

Ground Floor: Fitted Kitchen Opening into Dining Room, Conservatory with Under Floor Heating,

First Floor: Light and Airy Dual Aspect Lounge and Views to Ramsey Bay,

Two Spacious Double Bedrooms both with Wardrobes, One Large Single Bedroom,

Family Bathroom with Shower over Bath,

Beautiful Rear Garden with Lawn and Mature Shrubs,

Views are Stunning from the Top of the Garden which Benefits from Sun all day long.

Basement Style Workshop to the Rear of the Property.

Large Front Patio outside of the Conservatory with additional Side Patio.

Parking for 2 Vehicles.

‘Viewing Highly Recommended to Appreciate this Ideal Family Home’

‘No Onward Chain’

Directions: Travelling from Ramsey towards the coast road on Waterloo Road, turn right onto Queens Drive West, continue up and turn right onto The Crescent follow the road ahead and turn right onto The Crescent West, the property can be found on the left hand side easily identified by our 'for sale' board.

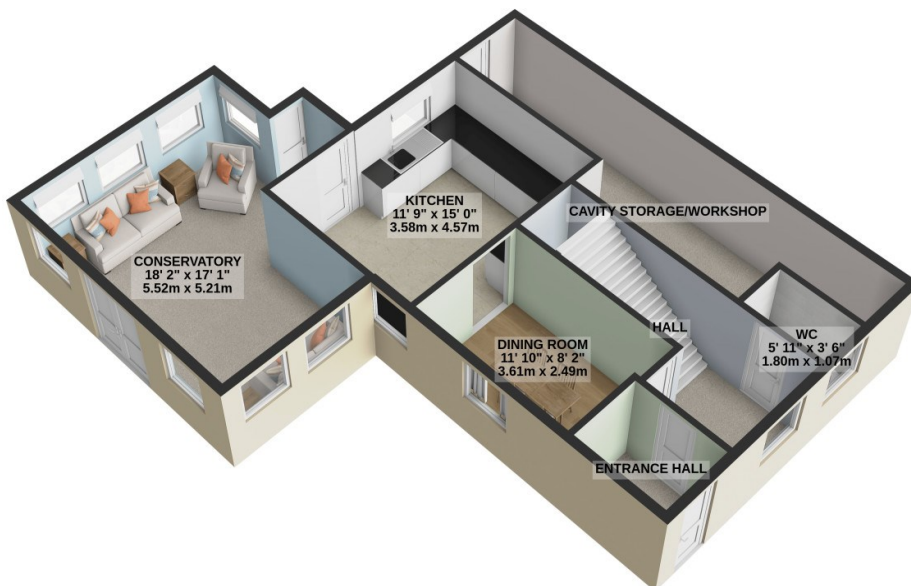
Rates: please contact the rates office on 685661

Tenure: Freehold

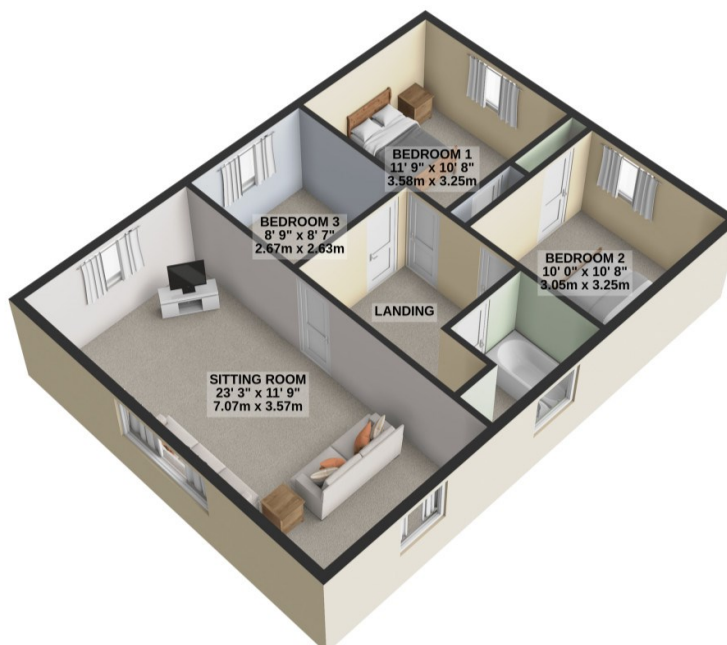
Services: mains drainage and oil fired central heating.



GROUND FLOOR
845 sq.ft. (78.5 sq.m.) approx.



1ST FLOOR
719 sq.ft. (66.8 sq.m.) approx.



TOTAL FLOOR AREA : 1564 sq.ft. (145.3 sq.m.) approx.

For illustrative purposes only. Decorative finishes, fixtures, fittings and furnishings do not represent the current state of the property. Measurements are approximate. Not to scale.
Made with Metropix © 2024

Property Wise Limited, 21 Parliament Street,

Ramsey, Isle of Man, IM8 1AS

Email: Info@propertywise.co.im