

83 Circular Road, Douglas

Asking Price £425,000



Deceptively Spacious Town House

Situated in a Convenient Central Location

Accommodation Over 4 Floors

Lounge

Brand New Schueller German Fitted Kitchen / Diner

4 Good Sized Bedrooms

2 Brand New Fitted Shower Rooms and Downstairs WC

Additional Shower Room in Basement (Not updated)

Large Store Room / Laundry Room

Integral Garage

Driveway Parking for 2 Cars

Gas Fired Central Heating

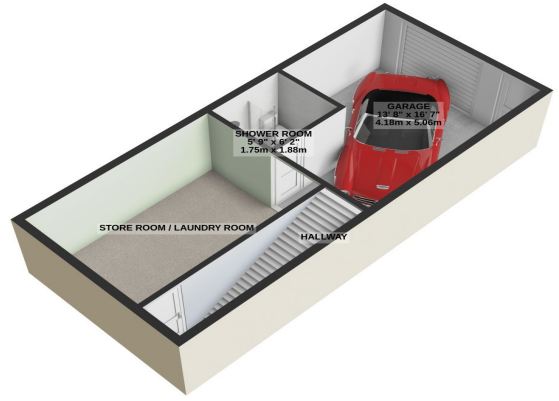
uPVC Double Glazed Throughout

Viewings Highly Recommended

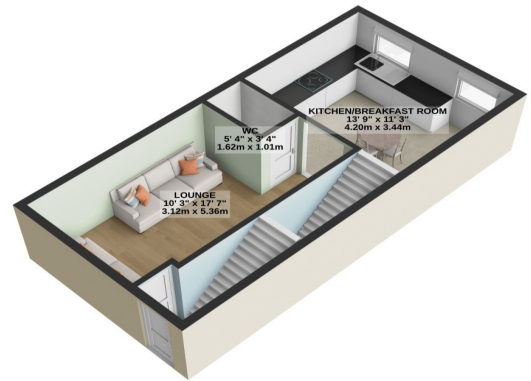
Directions: From the Lord Street Bus Station, travelling out of Town, Turn Right at First set of Traffic Lights on to Ridgeway Street then follow to Right on to Prospect Hill. Continue up Prosepect Hill Turning left at top of Hill in to Circular Road Where number 83 can be found just after the traffic Lights.



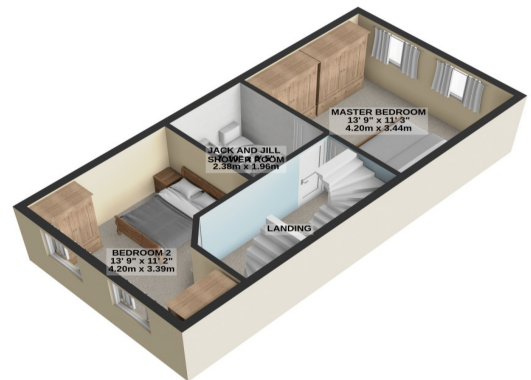
BASEMENT
429 sq.ft. (39.8 sq.m.) approx.



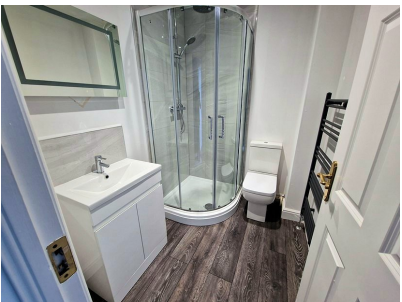
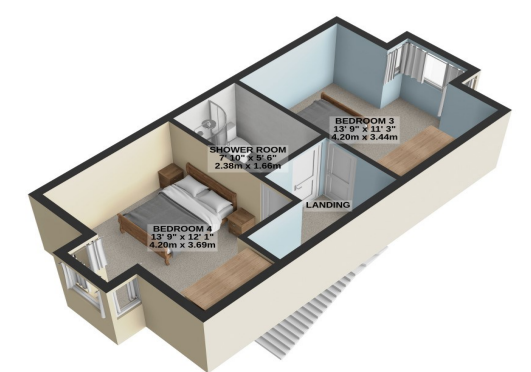
GROUND FLOOR
397 sq.ft. (36.9 sq.m.) approx.



1ST FLOOR
397 sq.ft. (36.9 sq.m.) approx.



2ND FLOOR
361 sq.ft. (33.5 sq.m.) approx.



TOTAL FLOOR AREA: 1584 sq.ft. (147.2 sq.m.) approx.

For illustrative purposes only. Decorative finishes, fixtures, fittings and furnishings do not represent the current state of the property. Measurements are approximate. Not to scale. Made with Metropix © 2024