

Blue Horizon, Pinfold Hill, Laxey
To Let £5,500 Per Calendar Month



A Beautiful, Modern Detached Coastal Property arranged over 3 floors
With Spectacular views over Laxey and Garwick Bay and out to sea
Imaginatively designed providing living space of the highest order

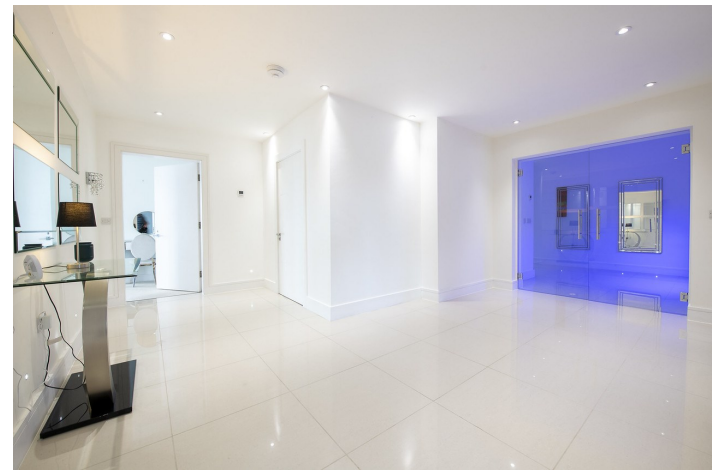
Lower Ground Floor: Large Hall, Master and Guest Bedroom with
Fabulous En Suite Facilities & Dressing Rooms. To the rear is a Large
Spacious Cinema/Leisure Room with its own Balcony & Hot Tub.

Ground Floor: Spacious Hall, Study, Split Level Open Plan
Dining/Living space which opens onto a Balcony
Superbly Finished Breakfast Kitchen, Utility and Cloakroom

First Floor: 3 further En Suite double Bedrooms
Majority of the Principal Rooms have Balcony access to take
advantage of the superb views
Generous Block Paved Driveway with Double Garage
Easily Managed Gardens

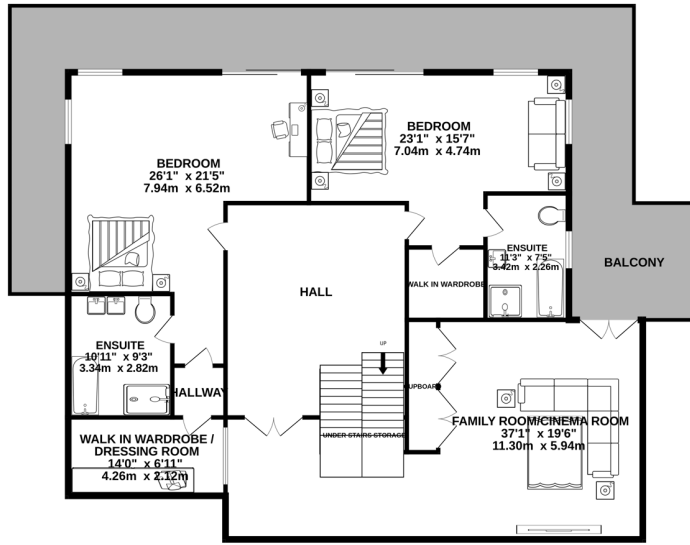
Viewing Highly Recommended to Appreciate This Outstanding Property
Property to be Let Fully Furnished and Inclusive of Rates and Water Rates

Directions: Leave Douglas centre via The Promenade and coast road and continue through Baldrine towards Laxey. On Pinfold Hill upon entering Laxey you will see on the left hand side a large white Welcome to Laxey sign and immediately before this a property on the left called Pinfold Cottage. Turn right directly opposite Pinfold Cottage onto the small private road across the MER lines and then straight ahead where the property will be found after a short distance directly facing.

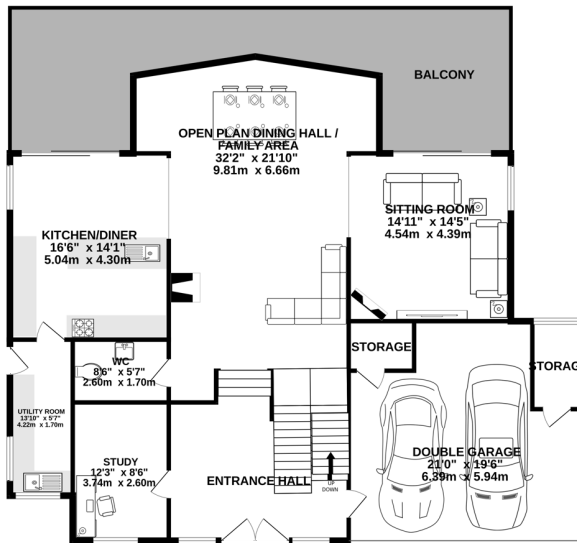




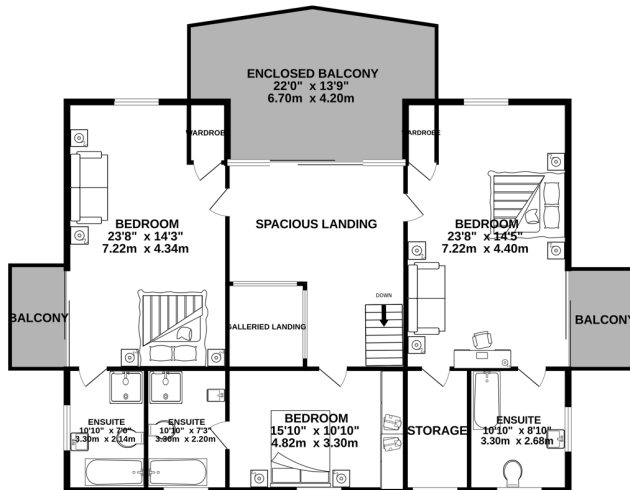
LOWER GROUND FLOOR
1919 sq.ft. (178.3 sq.m.) approx.



GROUND FLOOR
1795 sq.ft. (166.7 sq.m.) approx.



1ST FLOOR
1450 sq.ft. (134.7 sq.m.) approx.



TOTAL FLOOR AREA : 5164 sq.ft. (479.7 sq.m.) approx.

Whilst every attempt has been made to ensure the accuracy of the floorplan contained here, measurements of doors, windows, rooms and any other items are approximate and no responsibility is taken for any error, omission or mis-statement. This plan is for illustrative purposes only and should be used as such by any prospective purchaser. The services, systems and appliances shown have not been tested and no guarantee as to their operability or efficiency can be given.

1919 sq.ft. (178.3 sq.m.) approx.



GROUND FLOOR

1795 sq.ft. (166.7 sq.m.) approx.



1ST FLOOR

1450 sq.ft. (134.7 sq.m.) approx.



TOTAL FLOOR AREA : 5164 sq.ft. (479.7 sq.m.) approx.

For illustrative purposes only. Decorative finishes, fixtures, fittings and furnishings do not represent the current state of the property. Measurements are approximate. Not to scale.